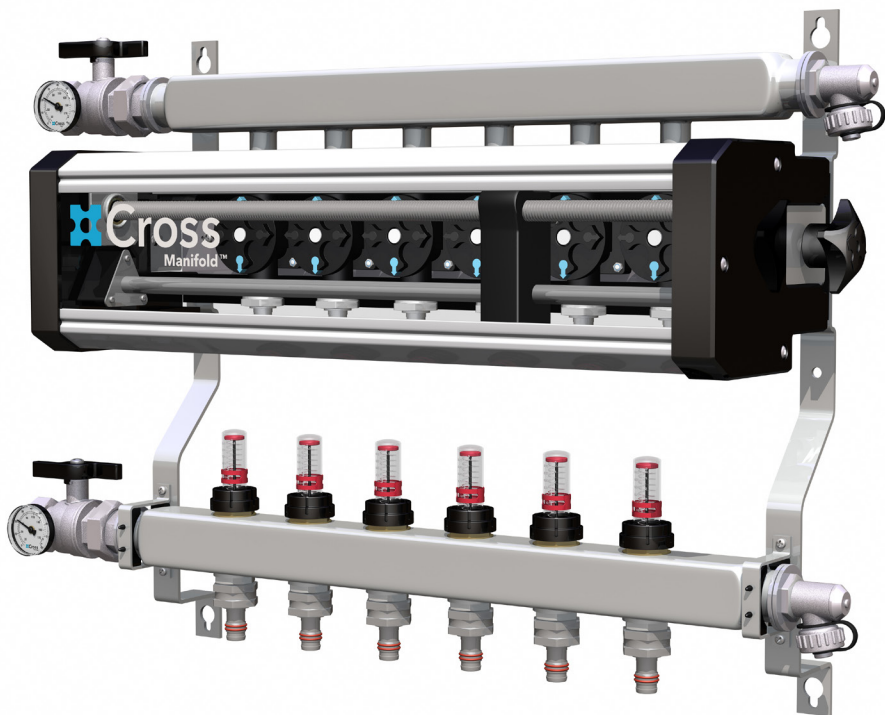


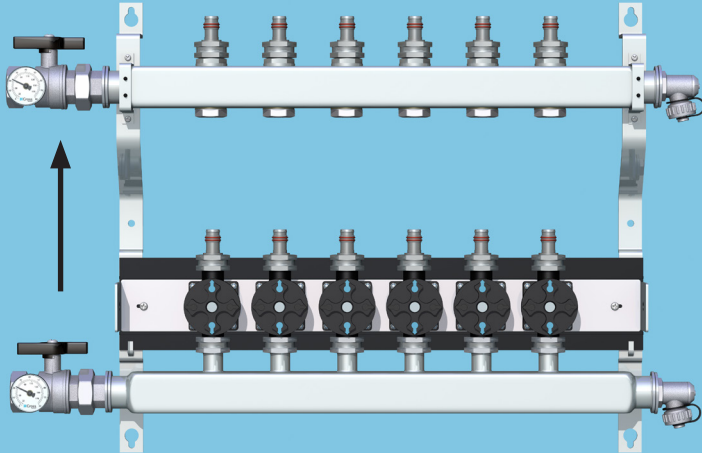
# Installation Guide



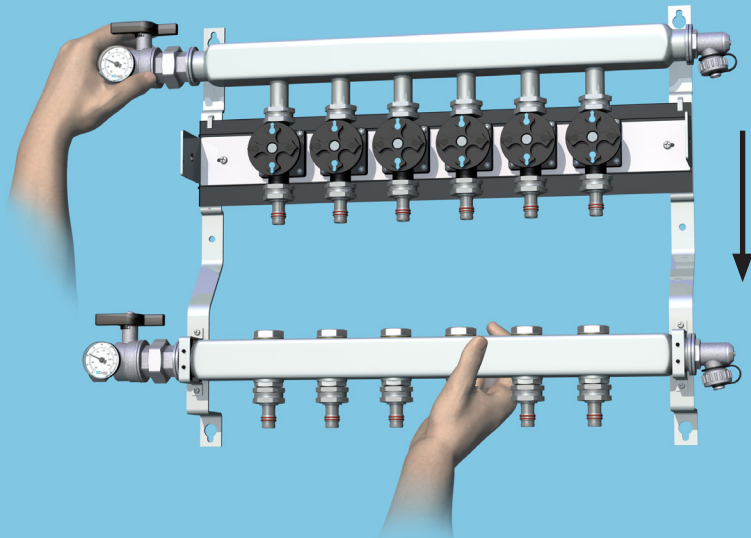
 **Cross**  
Hydronic Manifold System™

**STEP 1** Choose a position to mount the manifold.

**POSITION OPTION 1:** Upwards

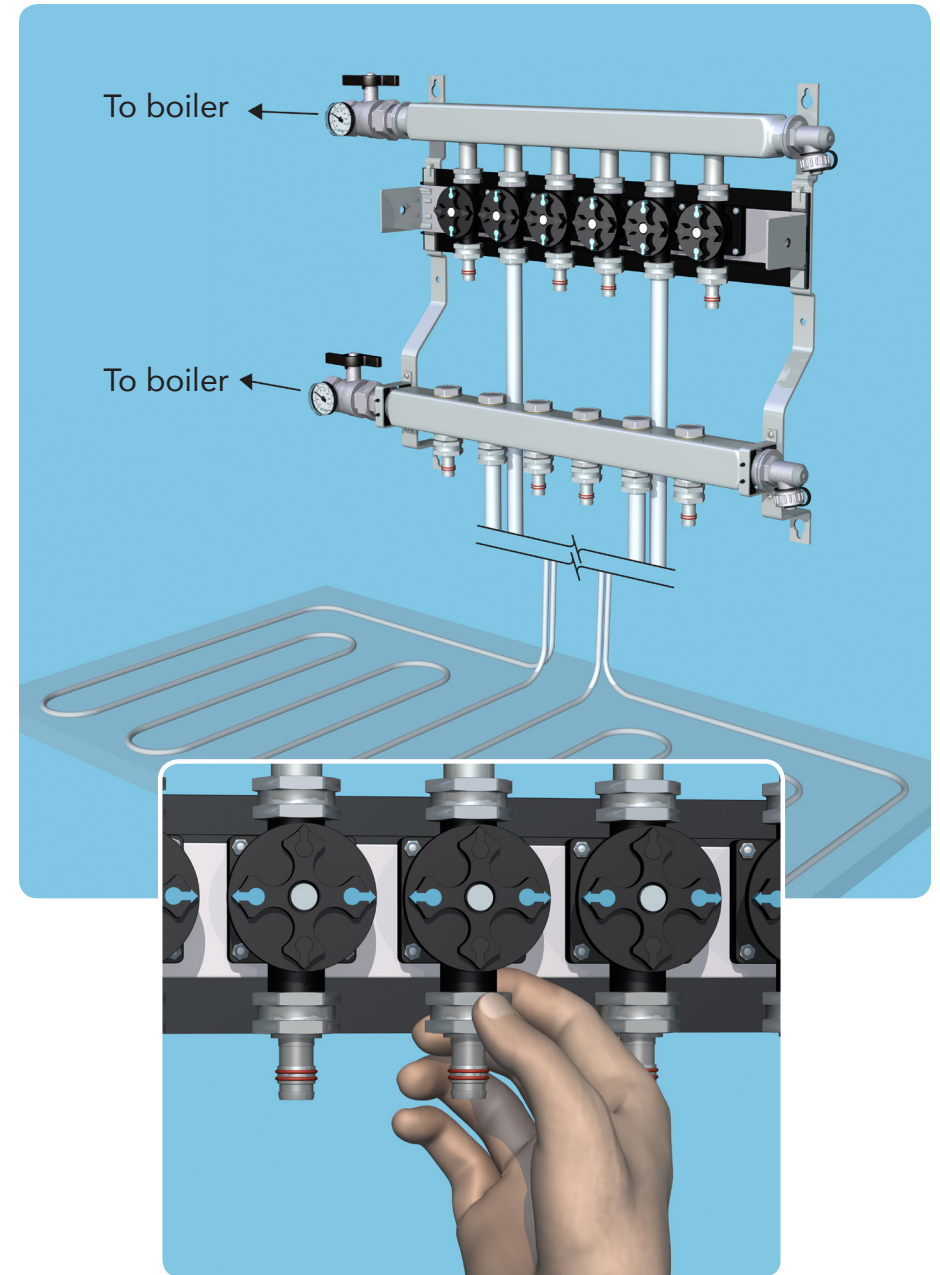


**POSITION OPTION 2:** Downwards



Secure manifold to the wall using rigid anchors or mounting screws.

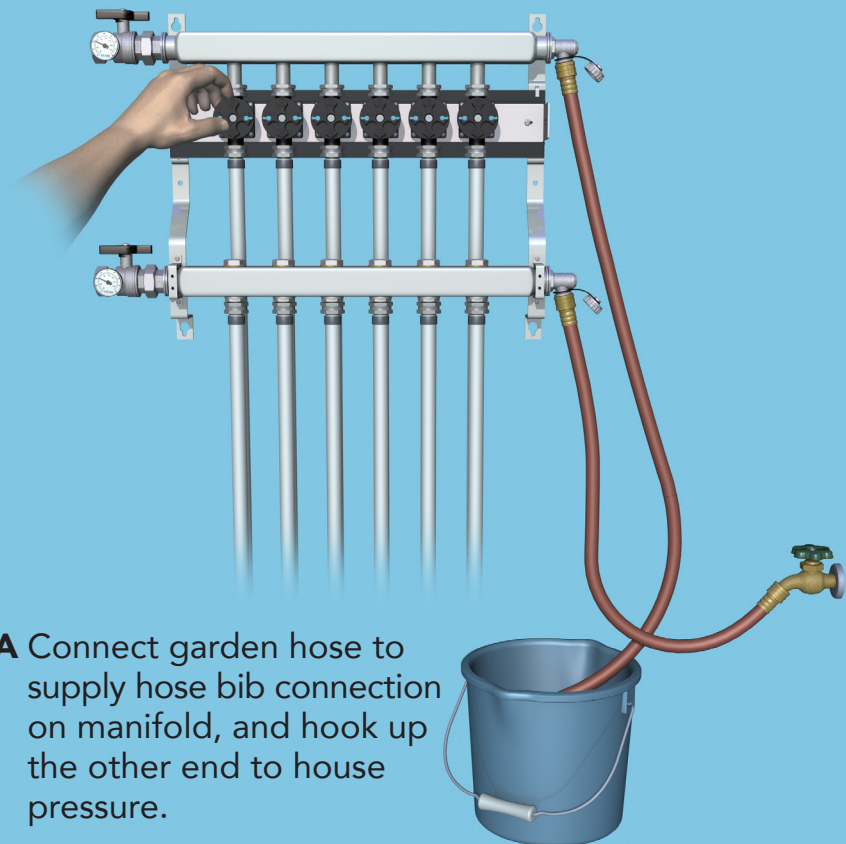
**STEP 2** Connect tubing loops and boiler piping.



**IMPORTANT!** Hand tighten only.

### STEP 3 Fill and purge the manifold.

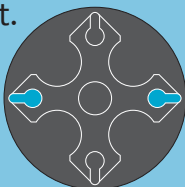
**NOTE!** To ensure proper system performance, it is important to purge the system.



**A** Connect garden hose to supply hose bib connection on manifold, and hook up the other end to house pressure.

**B** Connect garden hose to return manifold, and place the other end to drain or bucket.

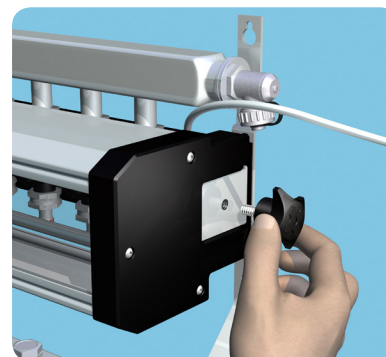
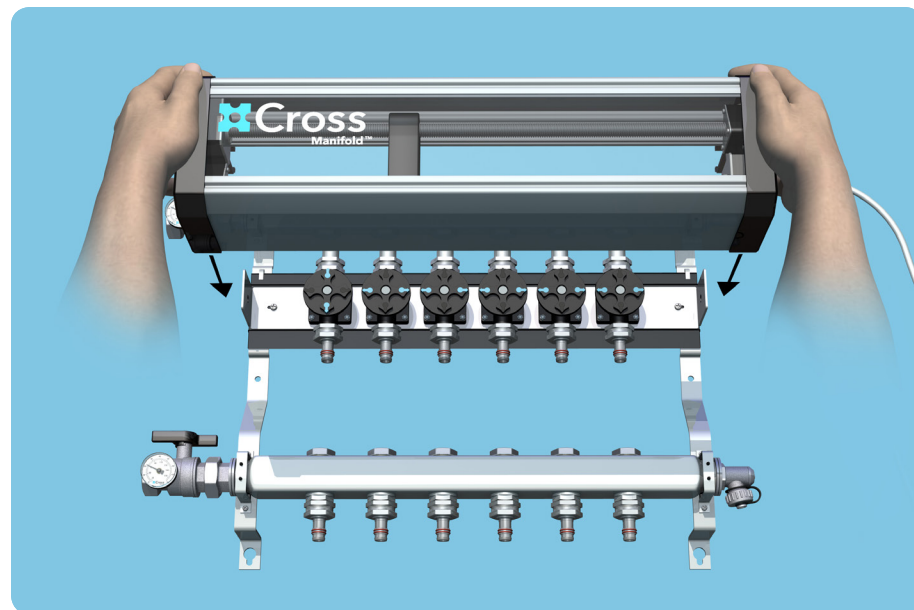
**C** Turn all Cross valves too the **off** position =



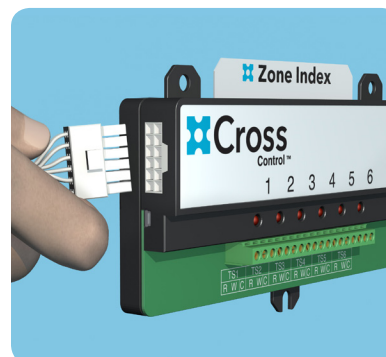
**Black Up**

**D** Allow high pressure from source to flow through loops one at a time, starting from furthest valve away from drain.

### STEP 4 Attach Cross motor carriage and control.

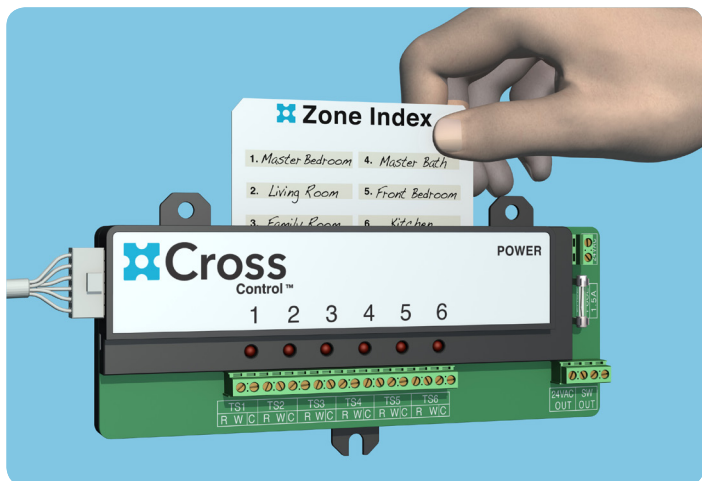
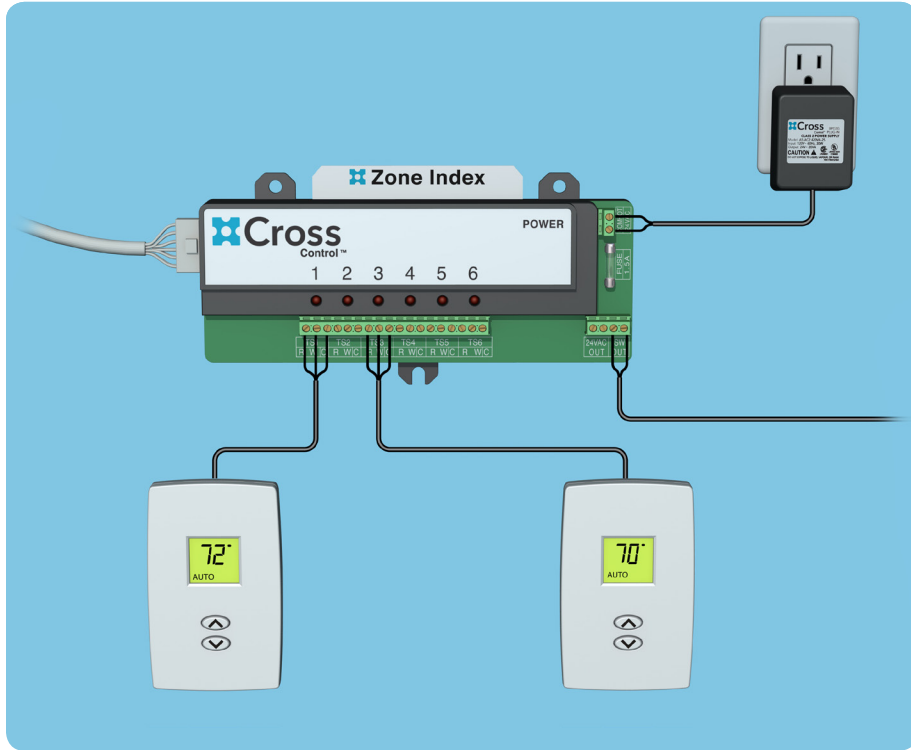


Screw handles in on sides.



Plug motor into Cross Control

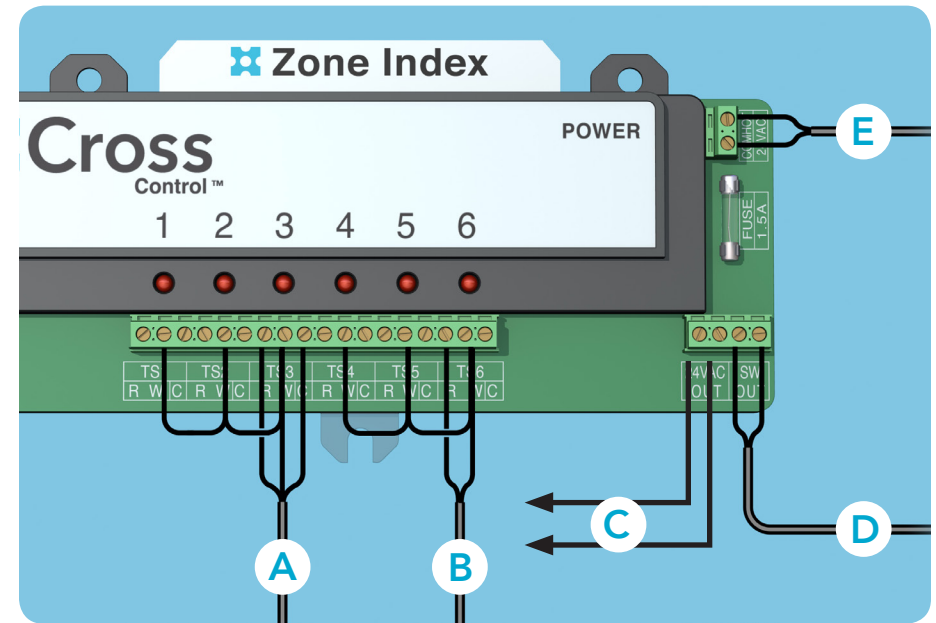
**STEP 5** Connect thermostat wire to Cross Control and plug into outlet.



Insert Zone Index card into the back slot.

**CONNECTING MULTIPLE ZONES USING A SINGLE THERMOSTAT**

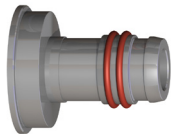
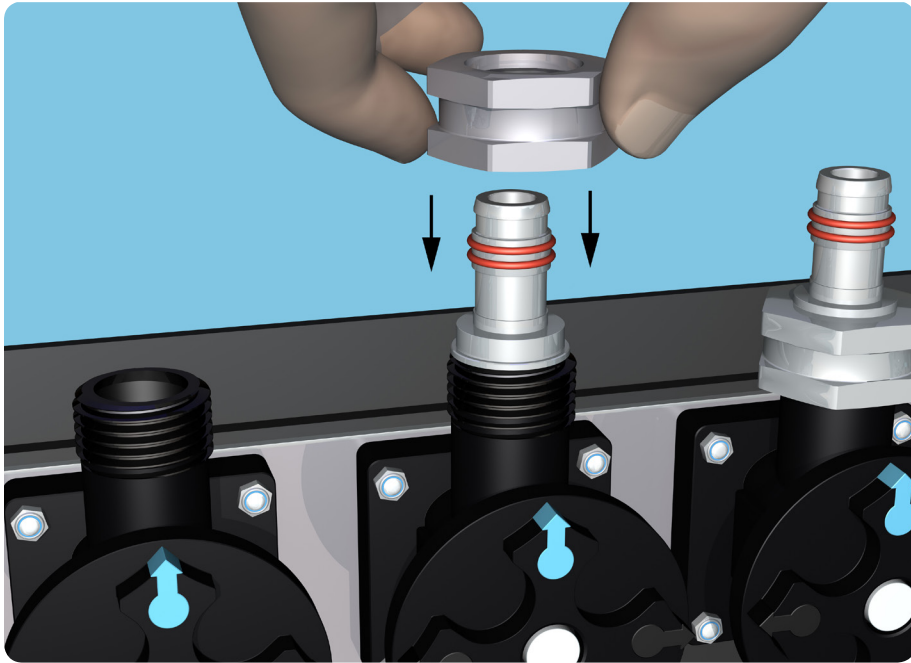
**NOTE** When using multiple loops with one thermostat, jumper the whites together.



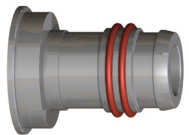
- A 3-Wire Thermostats:** Red to Left  
White to Right  
Black to Common
- B 2-Wire Thermostats:** Ignore common terminal block
- C** To optional 24V Relay
- D** N/O dry contact for boiler (TT) terminals
- E** Cross power supply



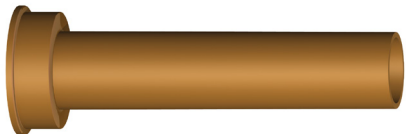
## EASY-CHANGE FITTINGS



**1/2 Universal PEX crimp fitting**  
For PEX, PEX-AL-PEX, PE-RT.



**3/4 Universal PEX crimp fitting**  
For PEX, PEX-AL-PEX, PE-RT.

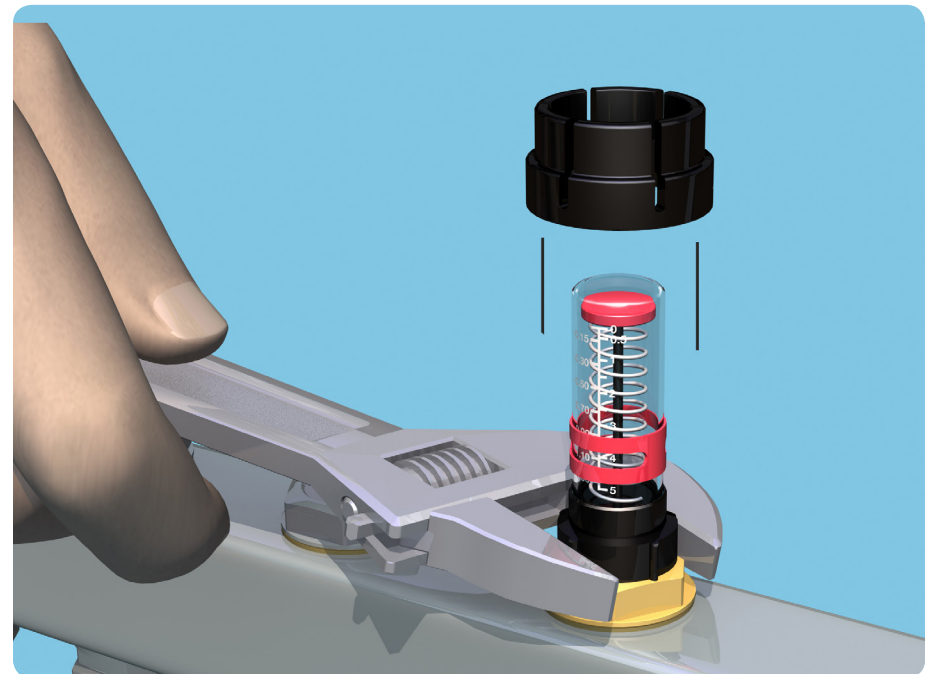
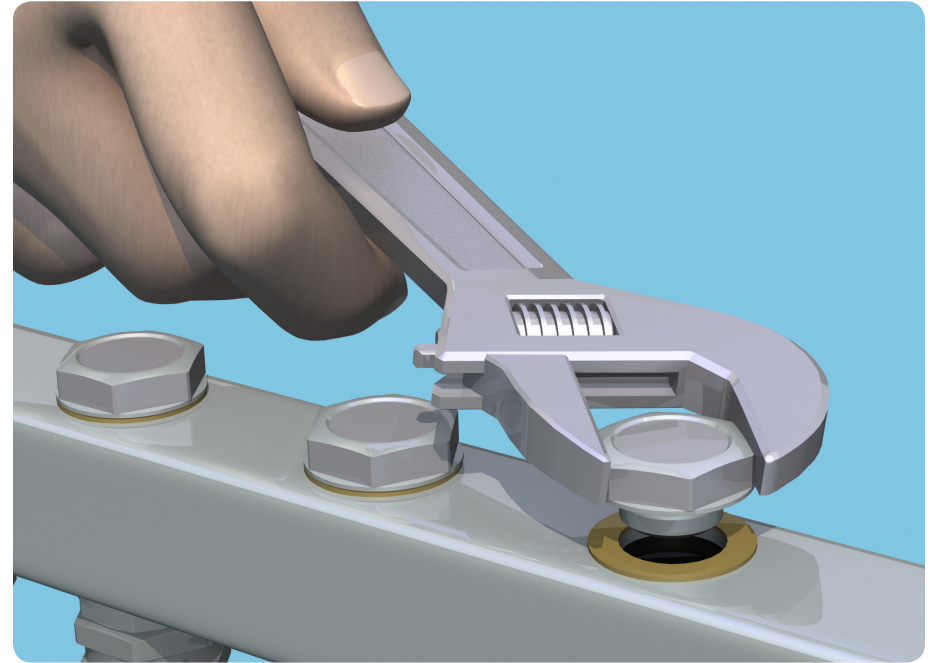


**1/2 Copper adaptor**  
For ProPress fitting or  
copper sweat fitting.



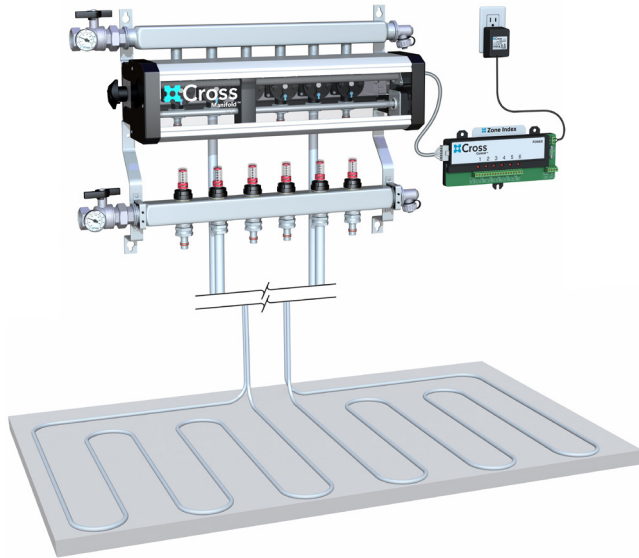
**3/4 Copper adaptor**  
For ProPress fitting or  
copper sweat fitting.

## ADDING BALANCING VALVE AND FLOW METER

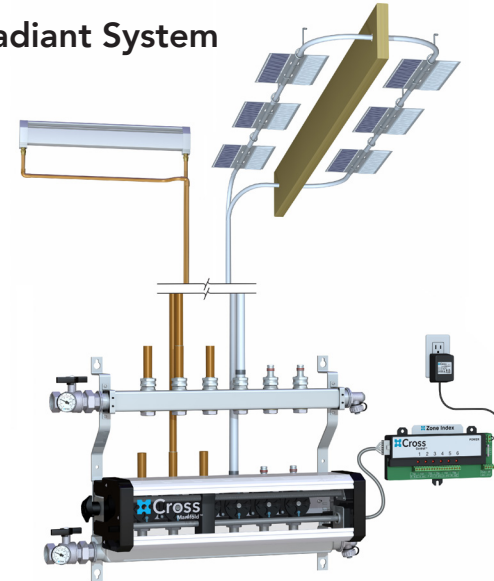


## INSTALLATION OPTIONS

### Radiant Heat



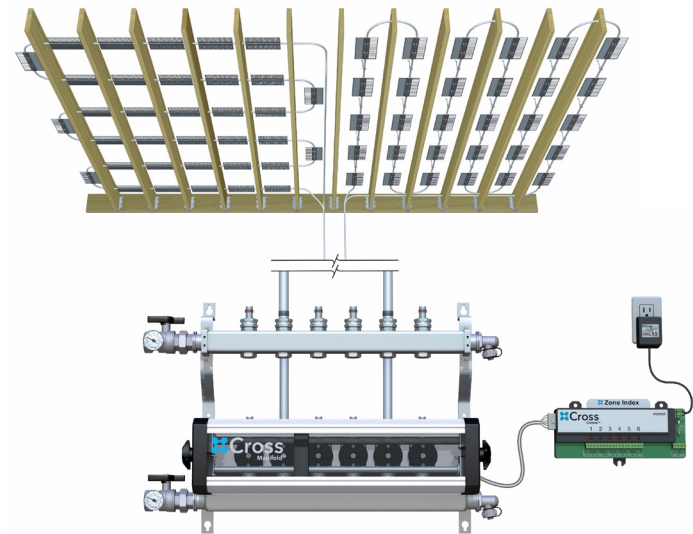
### Radiator + Ultra-Fin Radiant System



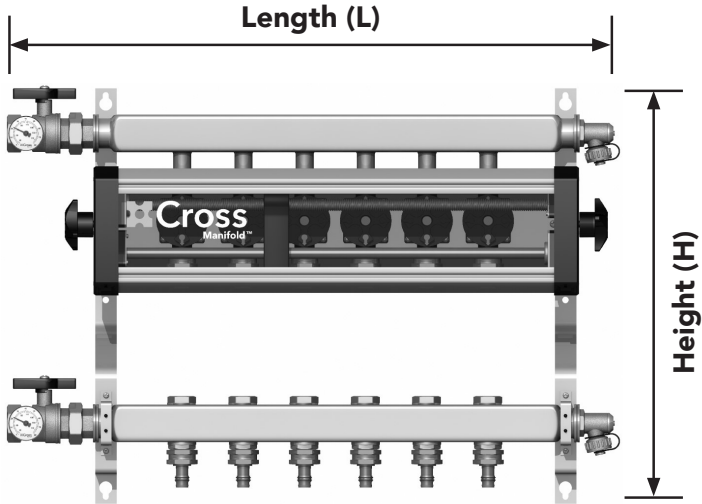
### Radiators



### Ultra-Fin Radiant System



## MANIFOLD DIMENSIONS



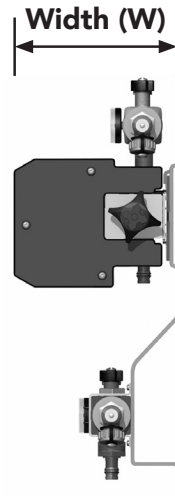
**Cross 4** (4 zone manifold)  
L 18 <sup>5</sup>/<sub>8</sub>" H 15 <sup>3</sup>/<sub>4</sub>" W 6"

**Cross 6** (6 zone manifold)  
L 23" H 15 <sup>3</sup>/<sub>4</sub>" W 6"

**Cross 8** (8 zone manifold)  
L 27 <sup>5</sup>/<sub>8</sub>" H 15 <sup>3</sup>/<sub>4</sub>" W 6"

**Cross 10** (10 zone manifold)  
L 31 <sup>5</sup>/<sub>8</sub>" H 15 <sup>3</sup>/<sub>4</sub>" W 6"

**Cross 12** (12 zone manifold)  
L 36" H 15 <sup>3</sup>/<sub>4</sub>" W 6"



## Contact Information

CALL TOLL-FREE 1 888 565 2267

EMAIL [info@crossmanifold.com](mailto:info@crossmanifold.com)

FAX TOLL-FREE 1 888 565 2228

OFFICE HOURS 7:00 - 4:00 PST

[www.crossmanifold.com](http://www.crossmanifold.com)

ULTRA-FIN INC.